



Coronet 32 Deepsea

The Americans call this type of cruiser a sportsfisherman. She is great for fishing, but she is equally great for family holiday cruising, since the unconventional design has provided her with more space inside and outside than found in any other boat her size.

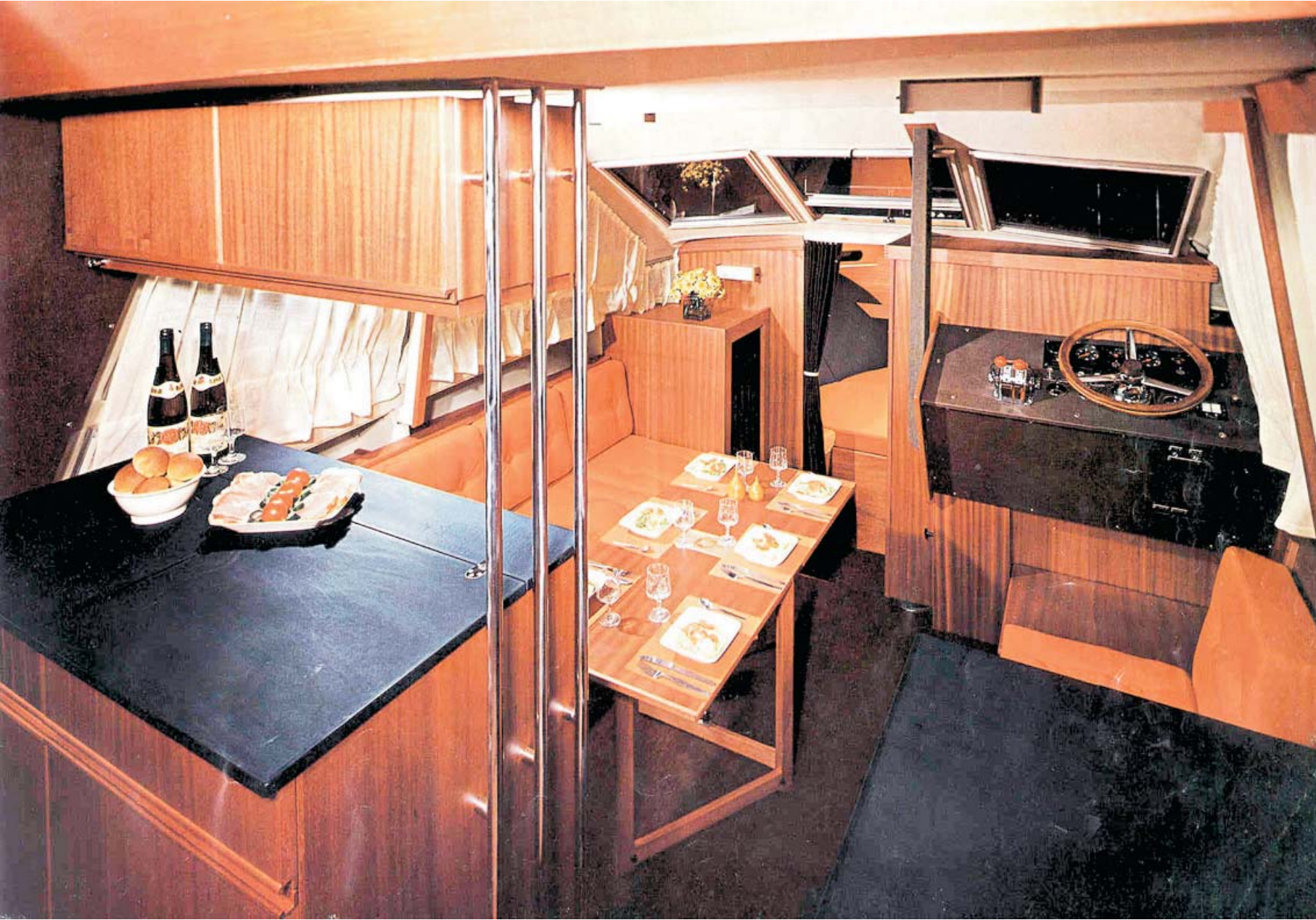
The exterior design is naturally dominated by the fly-bridge. It is spacious with two companion seats, one on each side of the pilot seat, plus a full length sunbathing seat in the rear. There is fingertip hydraulic steering both here and in the main cabin. Access to the bridge is easy with just three steps to climb from the side decks. From stem to stern good handrails ensure safe passing and a deep-grooved pattern makes the deck area real non-skid. The Deepsea sleeps 5 and provides sunbathing space for even more – on the bridge, on the front deck and in the cockpit.

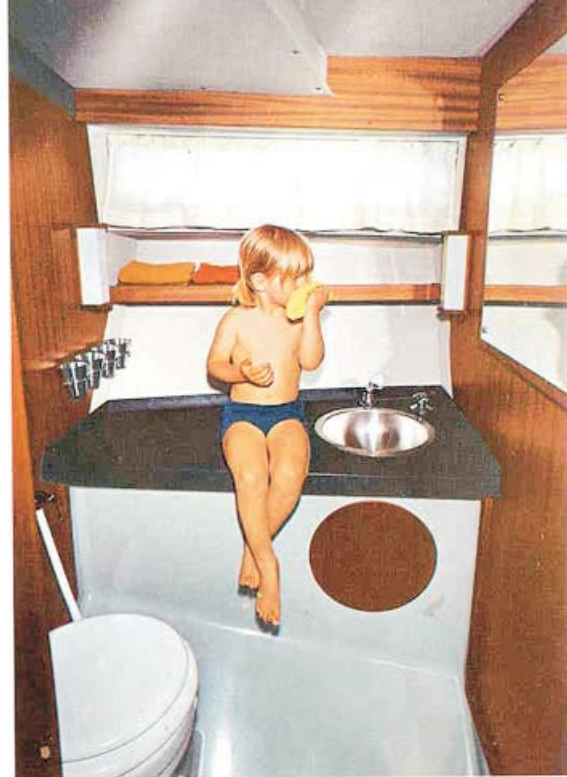
The cockpit is so spacious that one can arrange cocktail parties here. It's excellent for fishing too with its narrow side decks. The cabin table may be placed on the floorboards for outdoor family meals or you can use the cabin »cushion chairs« as sun mattresses. It is self-bailing, deep and childrensafe, and an optional camper with full head-room will cover the area completely.

The main cabin is in a way part of the cockpit, since the folding doors open completely. Another practical design feature is the transversely placed galley. The central position makes serving in the cockpit and cabin equally easy and gives the cook full control of what's going on. That's convenient with children on board. As shown on the photos next page, the galley is efficient with two-burner stove, stainless steel sink, water pressure system and specially designed drawers for complete tableware, pots and pans. Under the side decks additional stowing space is built in and bigger items go under the galley and the floorboards. The galley top opens to a vertical position, thus closing the gap to the cabin, or it may be folded down horizontally. Light is built in under the upper cabinet. A compartment at starboard holds a cutlery drawer and the 3,3 cubic feet refrigerator. The cabin is spacious, charming and comfortable. Even when seated you have a good view through the lowplaced side windows. Built into the galley compartment is a folding table, which fully extended serves 6. The comfortable sofa converts to a double berth and an extra berth can be arranged in the starboard side, where the two »cushion chairs« are placed.









The forward cabin is separated from the main cabin by a wardrobe and toilet section. Upholstered hullsides, soft cushions and beautiful woodwork has turned this bow section into an unusually charming room with access to the deck through a transparent hatch. The toilet offers a shower, a stainless steel basin, shelf for toilet articles, toothmugs with holders, racks for towels and a mirror, behind which there is access to the dashboard instruments.

The seaworthiness of the deep-Vee hull is proven second to none by the hundreds of Coronet 32 cruisers, which have for years successfully been operating around the world, either as pleasure boats or for commercial use. The reason for the superior seaworthiness is the fine

balance between the slender stem, the longitudinal steps and the moderate transom Vee. It is a fast, safe and comfortable running cruiser. The workmanship is top-class Danish and combines with first-class materials. The Coronet 32 Deepsea is another first from Botved Boats. There is simply no comparable boat on the market - except for the Coronet 32 Oceanfarer. But that is a completely different yacht.

Power options Standard power installation is twin 170/280 Volvo Penta Aquamatic engines, but the engine compartment allows other installations - diesel or gasoline engines with Aquamatic or Vee-drive. The boat is fitted with trim tabs.





STANDARD EQUIPMENT

Engine & Aquamatics & el. lifts
 Propellers
 Two batteries for engines 12 V
 Fuel tank with el. gauges,
 600 litres
 El. bilge pump
 El. blower
 Two fuel filters
 Oil pans under engines
 Master battery switches

Instrument panel, cabin:

Teak steering wheel
 Remote controls
 Tachometers
 Hourmeter

Instrument panel, flybridge

Teak steering wheel
 Remote controls
 Tachometers

Navigation lights:

Bowrail
 Cockpit rails
 Flybridge rails
 Metal handrails
 Deck hardware
 Six teak-cleats
 Flaggpole with socket
 Folding cabin door with lock
 Refrigerator with separate battery
 Stainless steel sink
 El. water pressure system
 Two-burner alcohol stove
 Folding towel holder
 Ventilation gratings
 Diningtable
 Hanging locker
 Pilot seat, cabin
 Chart shelf
 Toilet
 Stainless steel vanitory
 4 toothmugs with holders

Ashtray
 Soap dish
 Hooks for towels
 Shower

Toilet mirror
 El. socket 12 V
 Two glassholders
 Vented safety glass
 front windshield
 Sliding windows, safety glass
 Hatch on fordeck
 Cabin cushions
 Curtains
 Carpets
 Self-bailing cockpit
 Upholstered cockpit coaming
 Drain plug
 Flybridge cushion
 Flybridge pilot seat
 Flybridge windshield (acryl)
 Canvas cover for
 instrument panel
 Three windshield wipers
 Rubber water tanks 300 litres
 Two fire extinguishers
 Trim tabs

OPTIONAL EQUIPMENT

Cockpit camper curtain
 Swimming ladder
 Companion seats, flybridge
 Honda generator

SPECIFICATIONS

Length without Aquamatics:
 985 (32')
 Beam: 332 cm (10'9")
 Draft 48 cm (1'7")
 Weight without fuel and
 fresh water: Approx. 5000 kilos.
 Hull design: Waltman M. Walters
 & James R. Wynne.
 Design & styling:
 Hans B. Bertelsen, Botved Boats

